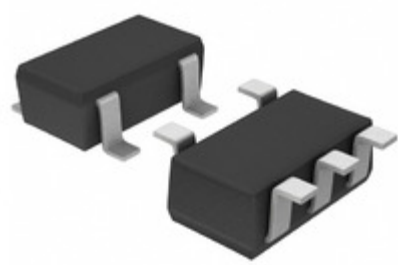




LAPIS Semiconductor



YIC International Co., Limited.

Image may be representation.
See specs for product details.

BU4831G-TR

Manufacturer Part Number:	BU4831G-TR
Manufacturer/Brand:	LAPIS Semiconductor
Part of Description:	IC VOLT DETECTOR 3.1V 5SSOP
Datasheets:	BU4831G-TR.pdf
RoHs Status:	Lead free / RoHS Compliant
Stock Condition:	New original, 24431 pcs Stock Available.
Ship From:	Hong Kong
Shipment Way:	DHL/Fedex/TNT/UPS/EMS

Specifications

Part Number	BU4831G-TR
Manufacturer	LAPIS Semiconductor
Description	IC VOLT DETECTOR 3.1V 5SSOP
Category	Integrated Circuits (ICs) > PMIC - Supervisors
Part Status	24431 pcs Stock
Series	-
Operating Temperature	-40°C ~ 125°C (TA)
Mounting Type	Surface Mount
Type	Simple Reset/Power-On Reset
Package / Case	SC-74A, SOT-753
Supplier Device Package	5-SSOP
Output	Open Drain or Open Collector
Reset	Active High/Active Low
Number of Voltages Monitored	1
Reset Timeout	-
Voltage - Threshold	3.1V
Packaging	Tape & Reel (TR)

BU4831G-TR is New Original in Stock, Search BU4831G-TR Datasheets, PDF, Inventory at Y-IC.com Online, Order BU4831G-TR LAPIS Semiconductor with warrantied and confidence.
RFQ BU4831G-TR : Info@Y-IC.com

You May Be Also Be interested In:

<p>BU4831FVE-TR LAPIS Semiconductor IC VOLT DETECTOR STD 5-VSOF</p>	<p>BU4831G ROHM BU4831G ROHM</p>	<p>BU4833F-TR LAPIS Semiconductor IC VOLT DETECTOR STD 4-SOP</p>	<p>BU4831F-TR LAPIS Semiconductor IC VOLT DETECTOR STD 4-SOP</p>
<p>BU4833FVE-TR LAPIS Semiconductor IC VOLT DETECTOR STD 5-VSOF</p>	<p>BU4830G-TR LAPIS Semiconductor IC VOLT DETECTOR 3.0V 5SSOP</p>	<p>BU4832FVE-TR LAPIS Semiconductor IC VOLT DETECTOR 3.2V VSOF5</p>	<p>BU4831 ROHM ROHM SOT343</p>

Hot Parts

More

- | | | | | |
|--|--|--|--|--|
| | | | | |
| | | | | |
| | | | | |
| | | | | |
| | | | | |
| | | | | |
| | | | | |
| | | | | |
| | | | | |
| | | | | |

Contact us: Info@Y-IC.com

ADD:Unit A5-B5 No.509, 5/F Sing Win Factory Building, 15-17 Shing yip St, Kwun Tong, Kowloon, HongKong.

Copyright © 2019 YIC International Co., Limited