

TOIREX

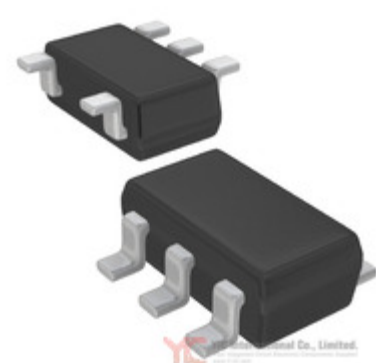


Image may be representation.
See specs for product details.

XC6123D322MR-G

Manufacturer Part Number:	XC6123D322MR-G
Manufacturer/Brand:	Torex Semiconductor Ltd.
Part of Description:	IC WATCHDOG TIMER SOT-25
Datasheets:	XC6123D322MR-G.pdf
RoHS Status:	Lead free / RoHS
Stock Condition:	Compliant New original, Stock Available.
Ship From:	Hong Kong
Shipment Way:	DHL/Fedex/TNT/UPS/EMS

Specifications

Part Number	XC6123D322MR-G
Manufacturer	Torex Semiconductor Ltd.
Description	IC WATCHDOG TIMER SOT-25
Category	Integrated Circuits (ICs) > PMIC - Supervisors
Part Status	Require For Quote & Check Stock
Series	-
Operating Temperature	-40°C ~ 85°C (TA)
Mounting Type	Surface Mount
Type	Watchdog Circuit
Package / Case	SC-74A, SOT-753
Supplier Device Package	SOT-25
Output	Open Drain or Open Collector
Reset	Active Low
Number of Voltages Monitored	1
Reset Timeout	100 ms Typical
Voltage - Threshold	2.2V
Packaging	Tape & Reel (TR)

XC6123D322MR-G is New Original in Stock, Search XC6123D322MR-G Datasheets, PDF, Inventory at Y-IC.com Online, Order XC6123D322MR-G Torex Semiconductor Ltd. with warrantied and confidence. RFQ XC6123D322MR-G : Info@Y-IC.com

You May Be Also Be interested

In:



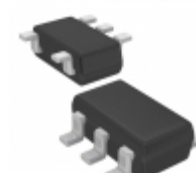
XC6123D321ER-G
Torex Semiconductor Ltd.
IC WATCHDOG TIMER 6-USP



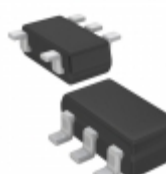
XC6123D325ER-G
Torex Semiconductor Ltd.
IC WATCHDOG TIMER 6-USP



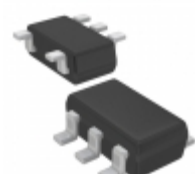
XC6123D327ER-G
Torex Semiconductor Ltd.
IC WATCHDOG TIMER 6-USP



XC6123D320MR-G
Torex Semiconductor Ltd.
IC WATCHDOG TIMER SOT-25



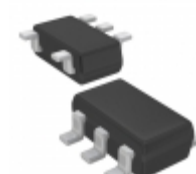
XC6123D326MR-G
Torex Semiconductor Ltd.
IC WATCHDOG TIMER SOT-25



XC6123D321MR-G
Torex Semiconductor Ltd.
IC WATCHDOG TIMER SOT-25



XC6123D320ER-G
Torex Semiconductor Ltd.
IC WATCHDOG TIMER 6-USP



XC6123D325MR-G
Torex Semiconductor Ltd.
IC WATCHDOG TIMER SOT-25

Hot Parts

More

12063A562FAT2A	12065A332JAT4A	1206YZ105KAT2A	D 24LC1026-I/SM	2595FB16A0100E
AD7865YSZ-1	ADM2687EBRIZ	D AT8010-E2R9HAAT/LF	AUIRFS3806	AXK7L26227G
BLM15AG102SN1	BZV55-C39-TR7	CGA3E2C0G1H181J080AD	CKCA43X7R1C104MT010N	CL05B331KB5NNNC
D CL10F473ZA8NNNC	DS1819BR-5/T&R	FDPF12N35	GRM1555C1E6R4CA01D	GRM2197U2A3R5CD01D
HN58X24512FPIAG	IRS2166DSTRPBF	K4X56163PN-FGC6	K6T1008C2C-GP70	KS621K40-F
LM7131ACM5X/BOPB	LPC1113FA44	D LPC47B387-NS	LT3640IFE#PBF	M34554M8-068FP
MAX734ESA	D MC10H109MEL	N3476TD380	PCF8802AUG/AB	PG0015.473NLT
PM800DV1B060	PMB8761V3.28	QT1110AZ45	S-80819ALNP-EAG-T2	SI4966DY
SKKE201/16-2	SKM150GB12T4	SM8S43HE3/2D	D SN65LVDS179DGKR	SN74F373N
SS2040LL	ST7FOXK2T6	VE-2TD-05	VT1103MFLX	XC2S100E-7PQG208C

Contact us: Info@Y-IC.com

ADD:Unit A5-B5 No.509, 5/F Sing Win Factory Building, 15-17 Shing yip St, Kwun Tong, Kowloon, HongKong.

Copyright © 2019 YIC International Co., Limited