



## GRM188R71A105KA01D

<b>Manufacturer Part Number:</b>	GRM188R71A105KA01D
<b>Manufacturer/Brand:</b>	MURATA
<b>Part of Description:</b>	MURATA SOT23
<b>RoHs Status:</b>	
<b>Stock Condition:</b>	New original, 2300 pcs Stock Available.
<b>Ship From:</b>	Hong Kong
<b>Shipment Way:</b>	DHL/Fedex/TNT/UPS/EMS

Image may be representation.  
See specs for product details.

### Specifications

Part Number	GRM188R71A105KA01D
Manufacturer	MURATA
Description	MURATA SOT23
Category	Integrated Circuits (ICs) > Specialized Hot ICs
Part Status	2300 pcs Stock
Series	-
RoHs Status	Lead free / RoHS Compliant
Condition	New Original Stock
Warranty	100% Perfect Functions
Lead Time	2-3days after payment.
Payment	PayPal / Telegraphic Transfer / Western Union
Shipping by	DHL / Fedex / UPS
Port	HongKong
RFQ Email	Info@Y-IC.com

GRM188R71A105KA01D is New Original in Stock, Search GRM188R71A105KA01D Datasheets, PDF, Inventory at Y-IC.com Online, Order GRM188R71A105KA01D with warrantied and confidence. RFQ GRM188R71A105KA01D : Info@Y-IC.com

### You May Be Also Be interested

In:



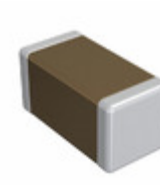
**GRM188R70J223KA01D**  
Murata Electronics  
CAP CER 0.022UF 6.3V X7R 0603



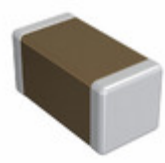
**GRM188R71A105KA61D**  
Murata Electronics  
CAP CER 1UF 10V X7R 0603



**GRM188R70J105MA01D**  
Murata Electronics  
CAP CER 1UF 6.3V X7R 0603



**GRM188R71A124JA01J**  
Murata Electronics  
CAP CER 0.12UF 10V X7R 0603



**GRM188R71A124JA01D**  
Murata Electronics  
CAP CER 0.12UF 10V X7R 0603



**GRM188R70J224KA88D**  
Murata Electronics  
CAP CER 0.22UF 6.3V X7R 0603



**GRM188R70J473KA01D**  
Murata Electronics  
CAP CER 0.047UF 6.3V X7R 0603



**GRM188R71A105KA61J**  
Murata Electronics  
CAP CER 1UF 10V X7R 0603

### Hot Parts

More

⚙️ 2MBI200P-140	⚙️ AAT3522IGY	➡️ AD6534BCP	D ADM1070ART-REEL7	➡️ AM26C311D
⚙️ AS1369-BWLT-18	⚙️ BD8014FVJ-E2	D CGA5L2X7R2A104M160AE	➡️ CKCA43X7R1H102MT0Y9N	➡️ CL21C681JBCNNND
⚙️ DL4933-13	⚙️ DM74LS08M	⚙️ ES2FHE3/52T	⚙️ FZ1200R17KE3-B2	➡️ FZ200R12KE3
D GJM1555C1H3R3CB01D	⚙️ ISL6609ACBZ-T	⚙️ ISL88550AIRZ-T	⚙️ L6258-TR	➡️ LC1207CB3TR33
➡️ LQW15AN91NG00D	⚙️ LTST-C190FKT-CS	⚙️ M29W128GSL70ZA6E	⚙️ MALS068XGLBF	➡️ MG75H2-CL1
⚙️ MIG300Q2CM1BX	➡️ MMBZ5231BT-7-F	D MMSF3P03HDR2G.	⚙️ MT9076BP	⚙️ N360CH32
⚙️ NL322525T-150J	D PCD80715H/D00/2	➡️ PIC12F615-I/MD	⚙️ PMB6255-13V-V1.2	➡️ PSD36C-LF-T7
⚙️ QM10KD1-12H	⚙️ RR2L4SDD	⚙️ RT9183-33GLF	➡️ SH100N21D	➡️ SM8A27-E3/2D
⚙️ SMP1321-001LF	⚙️ SS310-13-F	⚙️ ST24W01M/013TR	D STP45P03L	➡️ TCM1005-350-2P-T001
⚙️ TEN10-2421	⚙️ V375C2C50A	⚙️ V48B48C250BN3	⚙️ VE-230-09	➡️ ZXT12N20DXTR

Contact us: [Info@Y-IC.com](mailto:Info@Y-IC.com)

ADD: Unit A5-B5 No.509, 5/F Sing Win Factory Building, 15-17 Shing yip St, Kwun Tong, Kowloon, HongKong.

Copyright © 2019 YIC International Co., Limited