

Panasonic

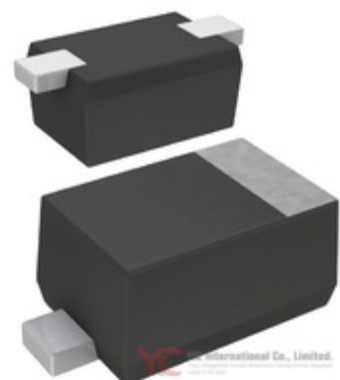


Image may be representation.
See specs for product details.

MA2SD320GL

Manufacturer Part Number:	MA2SD320GL
Manufacturer/Brand:	Panasonic
Part of Description:	DIODE SCHOTTKY 30V 200MA SSMINI2
Datasheets:	MA2SD320GL.pdf
RoHs Status:	Lead free / RoHS Compliant
Stock Condition:	New original, 2416920 pcs Stock Available.
Ship From:	Hong Kong
Shipment Way:	DHL/Fedex/TNT/UPS/EMS

Specifications

Part Number	MA2SD320GL
Manufacturer	Panasonic
Description	DIODE SCHOTTKY 30V 200MA SSMINI2
Category	Discrete Semiconductor Products > Diodes - Rectifiers -
Part Status	2416920 pcs Stock
Series	-
Mounting Type	Surface Mount
Package / Case	SC-79, SOD-523
Supplier Device Package	SSMini2-F4
Diode Type	Schottky
Current - Average Rectified (Io)	200mA
Voltage - Forward (Vf) (Max) @ If	560mV @ 200mA
Current - Reverse Leakage @ Vr	5µA @ 30V
Voltage - DC Reverse (Vr) (Max)	30V
Speed	Small Signal =< 200mA (Io), Any Speed
Reverse Recovery Time (trr)	2ns
Operating Temperature - Junction	125°C (Max)
Capacitance @ Vr, F	25pF @ 0V, 1MHz
Packaging	Tape & Reel (TR)

MA2SD320GL is New Original in Stock, Search MA2SD320GL Datasheets, PDF, Inventory at Y-IC.com Online, Order MA2SD320GL Panasonic with warrantied and confidence. RFQ MA2SD320GL : Info@Y-IC.com

You May Be Also Be interested In:

 MA2SD320G8S0 PANASON MA2SD320G8S0 PANASON	 MA2SD320GL+ Panasonic MA2SD320GL+ Panasonic	 MA2SD320G8S0+ Panason MA2SD320G8S0+ Panason	 MA2SD320G8SO+ Panasonic MA2SD320G8SO+ Panasonic
 MA2SE0100L Panasonic DIODE SCHOTTKY 20V 35MA SSMINI2	 MA2SP0100L-(TX) PANASONIC MA2SP0100L-(TX) PANASONIC	 MA2SD3200L Panasonic DIODE SCHOTTKY 30V 200MA SSMINI2	 MA2SD320GLBF PANASONIC MA2SD320GLBF PANASONIC

Hot Parts

[More](#)

- | | | | | |
|--------------|--------------|--------------|---------------|--------------------|
| MA2SD2400L | MA2SD2400L | MA2SD240GL | MA2SD240GLBF | MA2SD2500L |
| MA2SD2500L | MA2SD250GL | MA2SD2900L | MA2SD30009EP | MA2SD30009EP- |
| MA2SD300GL | MA2SD300GL+ | MA2SD31-TX | MA2SD3100L | MA2SD3100L/MA2SD31 |
| MA2SD310GL | MA2SD310GL+ | MA2SD310GLBF | MA2SD32008S | MA2SD32008SO |
| MA2SD3200L | MA2SD3200L+ | MA2SD320G8S0 | MA2SD320G8S0+ | MA2SD320G8SO+ |
| MA2SD320GL+ | MA2SD320GLBF | MA2SE0100L | MA2SP0500L | MA2SP050GL+ |
| MA2SP060GL | MA2SV01001JN | MA2SV0100L | MA2SV0200L | MA2SV020S1TD |
| MA2SV0300L | MA2SV030P2LW | MA2SV030P2TD | MA2SV030Q2TD | MA2SV0400L |
| MA2SV040P1TD | MA2SV040Q1TD | MA2SV090P1TD | MA2SV090Q1TD | MA2SV30Q2TD |
| MA2YD1500L | MA2YD1500L | MA2YD1500LS | MA2YD1500LS0 | MA2YD1500LSO |

Contact us:Info@Y-IC.com

ADD:Unit A5-B5 No.509, 5/F Sing Win Factory Building, 15-17 Shing yip St, Kwun Tong, Kowloon, HongKong.

Copyright © 2019 YIC International Co., Limited