

Panasonic

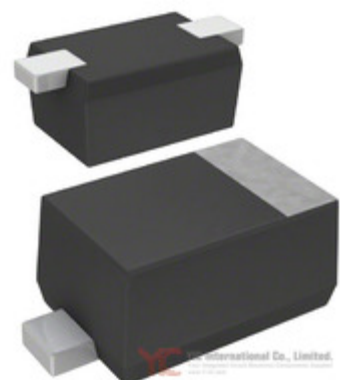


Image may be representation.
See specs for product details.

MA2SD190GL

Manufacturer Part Number:	MA2SD190GL
Manufacturer/Brand:	Panasonic
Part of Description:	DIODE SCHOTTKY 20V 200MA SSMINI2
Datasheets:	MA2SD190GL.pdf
RoHs Status:	Lead free / RoHS Compliant
Stock Condition:	New original, 24000 pcs Stock Available.
Ship From:	Hong Kong
Shipment Way:	DHL/Fedex/TNT/UPS/EMS

Specifications

Part Number	MA2SD190GL
Manufacturer	Panasonic
Description	DIODE SCHOTTKY 20V 200MA SSMINI2
Category	Discrete Semiconductor Products > Diodes - Rectifiers -
Part Status	24000 pcs Stock
Series	-
Mounting Type	Surface Mount
Package / Case	SC-79, SOD-523
Supplier Device Package	SSMini2-F4
Diode Type	Schottky
Current - Average Rectified (Io)	200mA
Voltage - Forward (Vf) (Max) @ If	470mV @ 200mA
Current - Reverse Leakage @ Vr	15µA @ 10V
Voltage - DC Reverse (Vr) (Max)	20V
Speed	Small Signal =< 200mA (Io), Any Speed
Reverse Recovery Time (trr)	2ns
Operating Temperature - Junction	125°C (Max)
Capacitance @ Vr, F	15pF @ 0V, 1MHz
Packaging	Tape & Reel (TR)

MA2SD190GL is New Original in Stock, Search MA2SD190GL Datasheets, PDF, Inventory at Y-IC.com Online, Order MA2SD190GL Panasonic with warrantied and confidence. RFQ MA2SD190GL : Info@Y-IC.com

You May Be Also Be interested In:

 MA2SD1900GL PANASON MA2SD1900GL PANASON	 MA2SD1900L Panasonic DIODE SCHOTTKY 20V 200MA SSMINI2	 MA2SD24002MR+ PANASONIC MA2SD24002MR+ PANASONIC	 MA2SD240GL Panasonic DIODE SCHOTTKY 20V 200MA SSMINI2
 MA2SD240GLBF PANASONI MA2SD240GLBF PANASONI	 MA2SD2400L PanaVise DIODE SCHOTTKY 20V 200MA SSMINI2	 MA2SD19 panason panason SOD523	 MA2SD14 Panasonic MA2SD14 Panasonic

Hot Parts

[More](#)

- | | | | | |
|--|--|--|--|--|
| | | | | |
| | | | | |
| | | | | |
| | | | | |
| | | | | |
| | | | | |
| | | | | |
| | | | | |
| | | | | |
| | | | | |

Contact us:Info@Y-IC.com

ADD:Unit A5-B5 No.509, 5/F Sing Win Factory Building, 15-17 Shing yip St, Kwun Tong, Kowloon, HongKong.

Copyright © 2019 YIC International Co., Limited