

**Panasonic**

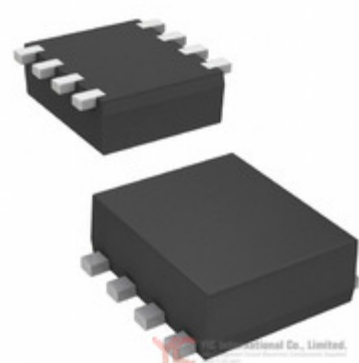


Image may be representation.  
See specs for product details.

## FC8V22040L

<b>Manufacturer Part Number:</b>	FC8V22040L
<b>Manufacturer/Brand:</b>	Panasonic
<b>Part of Description:</b>	MOSFET 2N-CH 24V 8A WMINI8-F1
<b>RoHS Status:</b>	Lead free / RoHS Compliant
<b>Stock Condition:</b>	New original, 9670 pcs Stock Available.
<b>Ship From:</b>	Hong Kong
<b>Shipment Way:</b>	DHL/Fedex/TNT/UPS/EMS

### Specifications

Part Number	FC8V22040L
Manufacturer	Panasonic
Description	MOSFET 2N-CH 24V 8A WMINI8-F1
Category	Discrete Semiconductor Products > Transistors - FETs,
Part Status	9670 pcs Stock
Series	-
Operating Temperature	-40°C ~ 85°C (TJ)
Mounting Type	Surface Mount
Power - Max	1W
Package / Case	8-SMD, Flat Lead
Supplier Device Package	WMini8-F1
FET Type	2 N-Channel (Dual)
FET Feature	Logic Level Gate
Drain to Source Voltage (Vdss)	24V
Current - Continuous Drain (Id) @ 25°C	8A
Rds On (Max) @ Id, Vgs	15 mOhm @ 4A, 4.5V
Vgs(th) (Max) @ Id	1.5V @ 1mA
Gate Charge (Qg) (Max) @ Vgs	-
Input Capacitance (Ciss) (Max) @ Vds	-
Packaging	Tape & Reel (TR)

FC8V22040L is New Original in Stock, Search FC8V22040L Datasheets, PDF, Inventory at Y-IC.com Online, Order FC8V22040L Panasonic with warrantied and confidence. RFQ  
FC8V22040L : Info@Y-IC.com

### You May Be Also Be interested In:

 <b>FC8AQCCMC6.0-T1</b> Fox Electronics CRYSTAL 6.0000MHZ 20PF SMD	 <b>FC8V33030L</b> Panasonic MOSFET 2N-CH 33V 6.5A WMINI8	 <b>FC8AQCCMM6.0-T1</b> Fox Electronics CRYSTAL 6.0000MHZ 20PF SMD	 <b>FC8AQCCMC4.9152-T1</b> Fox Electronics CRYSTAL 4.9152MHZ 20PF SMD
 <b>FC8V22080L</b> PANASON FC8V22080L PANASON	 <b>FC8AQCCMM3.6864-T1</b> Fox Electronics CRYSTAL 3.6864MHZ 20PF SMD	 <b>FC8J33040L</b> Panasonic MOSFET 2N-CH 33V 5A WMINI8-F1	 <b>FC8V22090L</b> PANASONIC FC8V22090L PANASONIC

### Hot Parts

More

- |                  |                        |                      |                      |                       |
|------------------|------------------------|----------------------|----------------------|-----------------------|
| ⊛ 06035A151MAT4A | ➔ 1210CC103KAT1A       | ➔ 1SMA75AT3G         | D 7MBR50NF060/       | ➔ ADP3330ARTZ-3.3-RL7 |
| ⊠ AXK834145YG    | ⊛ BC848W-B-RTK/P       | D BZX55-C51          | ➔ C0402C0G1C2R7B     | ➔ CAP1298-1-A4-TR     |
| ⊛ CD4066BCN      | ⊠ CGB2T1X6S0G105M022BC | ⊛ CL31B102K1FSFNE    | ➔ CS411699B          | ➔ DF75AA140           |
| D DH100065PR     | ⊛ FC801-TL             | ⊠ FC804-TL           | ⊛ FC80486DX4WB100    | ➔ FC805-TL            |
| ➔ FC809-TL       | ➔ FC809-TL-E           | ⊛ FC8J33040L         | ⊠ FC8V22080L         | ➔ FC8V22090L          |
| ➔ FS7140-02G-XTD | ➔ GCM2165C2A681JA16D   | D GQM1885C1H101GB01D | ⊛ GRM0335C1E7R2CA01D | ⊠ HHM1523B3           |
| ⊛ LM25017SD/NOPB | D LT1521CS8#TRPBF      | ➔ LT3467IDDB#TRPBF   | ➔ LTC1562AIG#TRPBF   | ➔ LTC1966CMS8         |
| ⊠ MAX362CSE      | ⊛ MAX4012EUK           | ➔ RPR-0512RS         | ➔ RT1N241M-T112-1    | ➔ SIA814DJ-T1-GE3     |
| ⊛ SMCJ17CA       | ⊠ SML4762A             | ⊛ SMP1322-001LF      | D SN74LV244APWR      | ➔ SP485CN-L/TR        |
| ➔ T1309N16TOF    | ⊛ T529N09TOF           | ⊠ V300C28C150B2      | ⊛ VI-2N1-CW/F2       | ➔ VI-HAM-CM-06/F2     |

Contact us: [Info@Y-IC.com](mailto:Info@Y-IC.com)

ADD: Unit A5-B5 No.509, 5/F Sing Win Factory Building, 15-17 Shing yip St, Kwun Tong, Kowloon, HongKong.

Copyright © 2019 YIC International Co., Limited