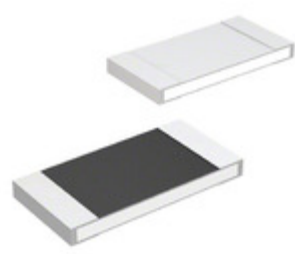




LAPIS Semiconductor



YIC International Co., Limited.

Image may be representation.  
See specs for product details.

## MCR10EZPJ363

<b>Manufacturer Part Number:</b>	MCR10EZPJ363
<b>Manufacturer/Brand:</b>	LAPIS Semiconductor
<b>Part of Description:</b>	RES SMD 36K OHM 5% 1/8W 0805
<b>Datasheets:</b>	<a href="#">MCR10EZPJ363.pdf</a>
<b>RoHs Status:</b>	Lead free / RoHS Compliant
<b>Stock Condition:</b>	New original, 4670 pcs Stock Available.
<b>Ship From:</b>	Hong Kong
<b>Shipment Way:</b>	DHL/Fedex/TNT/UPS/EMS

### Specifications

Part Number	MCR10EZPJ363
Manufacturer	LAPIS Semiconductor
Description	RES SMD 36K OHM 5% 1/8W 0805
Category	Resistors > Chip Resistor - Surface Mount
Part Status	4670 pcs Stock
Series	MCR
Operating Temperature	-55°C ~ 155°C
Size / Dimension	0.079" L x 0.049" W (2.00mm x 1.25mm)
Height - Seated (Max)	0.026" (0.65mm)
Features	Automotive AEC-Q200
Tolerance	±5%
Package / Case	0805 (2012 Metric)
Temperature Coefficient	±200ppm/°C
Failure Rate	-
Supplier Device Package	0805
Power (Watts)	0.125W, 1/8W
Resistance (Ohms)	36k
Number of Terminations	2
Composition	Thick Film
Packaging	Tape & Reel (TR)

MCR10EZPJ363 is New Original in Stock, Search MCR10EZPJ363 Datasheets, PDF, Inventory at Y-IC.com Online, Order MCR10EZPJ363 LAPIS Semiconductor with warrantied and confidence. RFQ MCR10EZPJ363 : Info@Y-IC.com

### You May Be Also Be interested In:

<p><b>MCR10EZPJ390</b> LAPIS Semiconductor RES SMD 39 OHM 5% 1/8W 0805</p>	<p><b>MCR10EZPJ391</b> LAPIS Semiconductor RES SMD 390 OHM 5% 1/8W 0805</p>	<p><b>MCR10EZPJ335</b> LAPIS Semiconductor RES SMD 3.3M OHM 5% 1/8W 0805</p>	<p><b>MCR10EZPJ360</b> LAPIS Semiconductor RES SMD 36 OHM 5% 1/8W 0805</p>
<p><b>MCR10EZPJ392</b> LAPIS Semiconductor RES SMD 3.9K OHM 5% 1/8W 0805</p>	<p><b>MCR10EZPJ361</b> LAPIS Semiconductor RES SMD 360 OHM 5% 1/8W 0805</p>	<p><b>MCR10EZPJ393</b> LAPIS Semiconductor RES SMD 39K OHM 5% 1/8W 0805</p>	<p><b>MCR10EZPJ334</b> LAPIS Semiconductor RES SMD 330K OHM 5% 1/8W 0805</p>

### Hot Parts

More


Contact us: [Info@Y-IC.com](mailto:Info@Y-IC.com)

ADD: Unit A5-B5 No.509, 5/F Sing Win Factory Building, 15-17 Shing yip St, Kwun Tong, Kowloon, HongKong.

Copyright © 2019 YIC International Co., Limited