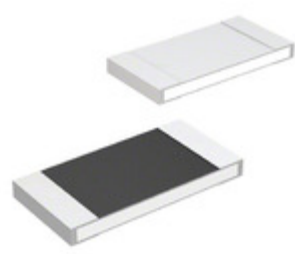




LAPIS Semiconductor



YIC International Co., Limited.

Image may be representation.
See specs for product details.

MCR10EZHZH102

Manufacturer Part Number:	MCR10EZHZH102
Manufacturer/Brand:	LAPIS Semiconductor
Part of Description:	RES SMD 1K OHM 5% 1/8W 0805
Datasheets:	MCR10EZHZH102.pdf
RoHS Status:	Lead free / RoHS Compliant
Stock Condition:	New original, 5000 pcs Stock Available.
Ship From:	Hong Kong
Shipment Way:	DHL/Fedex/TNT/UPS/EMS

Specifications

Part Number	MCR10EZHZH102
Manufacturer	LAPIS Semiconductor
Description	RES SMD 1K OHM 5% 1/8W 0805
Category	Resistors > Chip Resistor - Surface Mount
Part Status	5000 pcs Stock
Series	MCR
Operating Temperature	-55°C ~ 155°C
Size / Dimension	0.079" L x 0.049" W (2.00mm x 1.25mm)
Height - Seated (Max)	0.026" (0.65mm)
Features	-
Tolerance	±5%
Package / Case	0805 (2012 Metric)
Temperature Coefficient	±200ppm/°C
Failure Rate	-
Supplier Device Package	0805
Power (Watts)	0.125W, 1/8W
Resistance (Ohms)	1k
Number of Terminations	2
Composition	Thick Film
Packaging	Tape & Reel (TR)

MCR10EZHZH102 is New Original in Stock, Search MCR10EZHZH102 Datasheets, PDF, Inventory at Y-IC.com Online, Order MCR10EZHZH102 LAPIS Semiconductor with warrantied and confidence. RFQ MCR10EZHZH102 : Info@Y-IC.com

You May Be Also Be interested In:

<p>MCR10EZHZH000 LAPIS Semiconductor RES SMD 0.0 OHM JUMPER 1/8W 0805</p>	<p>MCR10EZHZH104 LAPIS Semiconductor RES SMD 100K OHM 5% 1/8W 0805</p>	<p>MCR10EZHF082 LAPIS Semiconductor RES SMD 0.082 OHM 1% 1/4W 0805</p>	<p>MCR10EZHZH103 LAPIS Semiconductor RES SMD 10K OHM 5% 1/8W 0805</p>
<p>MCR10EZHF091 LAPIS Semiconductor RES SMD 0.091 OHM 1% 1/4W 0805</p>	<p>MCR10EZHZH110 LAPIS Semiconductor RES SMD 11 OHM 5% 1/8W 0805</p>	<p>MCR10EZHZH106 LAPIS Semiconductor RES SMD 10M OHM 5% 1/8W 0805</p>	<p>MCR10EZHZH105 LAPIS Semiconductor RES SMD 1M OHM 5% 1/8W 0805</p>

Hot Parts

More

MCR100JZHJ680	MCR100JZHJ6R2	MCR100JZHJ751	MCR100JZHJ820	MCR100JZHJ821
MCR100JZHJ9R1	MCR100JZHJLR22	MCR100JZHJLR22	MCR100JZHJLR47	MCR100JZHJLR47
MCR100JZHJLR56	MCR100JZHJLR56	MCR100L-6	MCR100L-6A-HF	MCR100L-6B
MCR100L-8-AB3-R	MCR106-006	MCR106-8	MCR106-8G	MCR106L-8
MCR10EZHF1001	MCR10EZHF2000	MCR10EZHF240	MCR10EZHF100-0.1R	MCR10EZHZH000
MCR10EZHZH104	MCR10EZHZH153	MCR10EZHZH1R0	MCR10EZHZH200	MCR10EZHZH305
MCR10EZHZH331	MCR10EZHZH362	MCR10EZHZH472	MCR10EZHZH510	MCR10EZHZH683
MCR10EZHZH820	MCR10EZHZJLR400	MCR10EZPF1101	MCR10EZPF40R2	MCR10EZPF40R2
MCR10EZPJ220	MCR10EZPJ363	MCR10FZPF2001	MCR12DCM	MCR12DCMT4
MCR12DCMT4G	MCR12DCNT4	MCR12DCNT4G	MCR12DSMT4G	MCR18EZHF1002

Contact us: Info@Y-IC.com

ADD: Unit A5-B5 No.509, 5/F Sing Win Factory Building, 15-17 Shing yip St, Kwun Tong, Kowloon, HongKong.

Copyright © 2019 YIC International Co., Limited