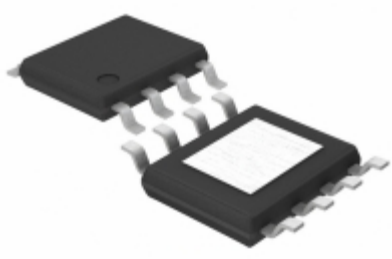




LAPIS Semiconductor



YIC International Co., Limited.

Image may be representation.  
See specs for product details.

## BD15GA5WEFJ-E2

|                                  |   |
|----------------------------------|---|
| <b>Manufacturer Part Number:</b> | BD15GA5WEFJ-E2                              |
| <b>Manufacturer/Brand:</b>       | LAPIS Semiconductor                         |
| <b>Part of Description:</b>      | IC REG LDO 1.5V 0.5A 8HTSOP-J               |
| <b>Datasheets:</b>               | <a href="#">BD15GA5WEFJ-E2.pdf</a>          |
| <b>RoHs Status:</b>              | Lead free / RoHS                            |
| <b>Stock Condition:</b>          | Compliant<br>New original, Stock Available. |
| <b>Ship From:</b>                | Hong Kong                                   |
| <b>Shipment Way:</b>             | DHL/Fedex/TNT/UPS/EMS                       |

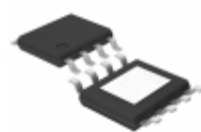
### Specifications

|                             |   |
|-----------------------------|---|
| Part Number                 | BD15GA5WEFJ-E2  |
| Manufacturer                | LAPIS Semiconductor                                     |
| Description                 | IC REG LDO 1.5V 0.5A 8HTSOP-J                           |
| Category                    | Integrated Circuits (ICs) > PMIC - Voltage Regulators - |
| Part Status                 | Require For Quote & Check Stock                         |
| Series                      | -   |
| Operating Temperature       | -25°C ~ 85°C  |
| Mounting Type               | Surface Mount   |
| Voltage - Input             | 4.5 V ~ 14 V  |
| Package / Case              | 8-SOIC (0.154", 3.90mm Width) Exposed Pad               |
| Supplier Device Package     | 8-HTSOP-J   |
| Voltage - Output            | 1.5V  |
| Current - Output            | 500mA   |
| Regulator Topology          | Positive Fixed  |
| Voltage - Dropout (Typical) | 0.6V @ 500mA  |
| Number of Regulators        | 1   |
| Current - Limit (Min)       | -   |
| Packaging                   | Tape & Reel (TR)  |

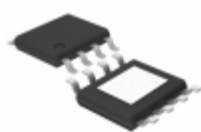
BD15GA5WEFJ-E2 is New Original in Stock, Search BD15GA5WEFJ-E2 Datasheets, PDF, Inventory at Y-IC.com Online, Order BD15GA5WEFJ-E2 LAPIS Semiconductor with warrantied and confidence. RFQ BD15GA5WEFJ-E2 : Info@Y-IC.com

### You May Be Also Be interested

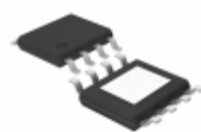
In:



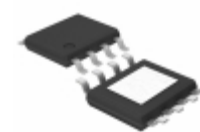
**BD15GA3MEFJ-ME2**  
LAPIS Semiconductor  
IC REG LDO 1.5V 0.3A 8HTSOP



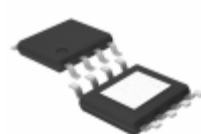
**BD15GA5MEFJ-ME2**  
LAPIS Semiconductor  
IC REG LDO 1.5V 0.5A 8HTSOP



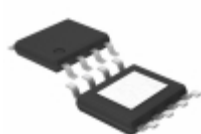
**BD15GC0WEFJ-E2**  
LAPIS Semiconductor  
IC REG LDO 1.5V 1A 8HTSOP-J



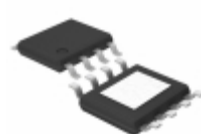
**BD15GA3MEFJ-LBH2**  
LAPIS Semiconductor  
IC REG LIN 1.5V 300MA 8HTSOP-J



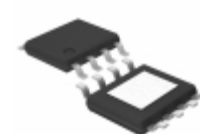
**BD15GC0MEFJ-LBH2**  
LAPIS Semiconductor  
IC REG LINEAR 1.5V 1A 8HTSOP-J



**BD15HA3WEFJ-E2**  
LAPIS Semiconductor  
IC REG LDO 1.5V 0.3A 8-HTSOP



**BD15GA5MEFJ-LBH2**  
LAPIS Semiconductor  
IC REG LIN 1.5V 500MA 8HTSOP-J



**BD15HA3MEFJ-ME2**  
LAPIS Semiconductor  
IC REG LDO 1.5V 0.3A 8HTSOP

### Hot Parts

More

|                    |                      |                 |                       |                    |
|--------------------|----------------------|-----------------|-----------------------|--------------------|
| 04025A180FAT2A     | 08051C471KAT2A       | 18122A682GAT2A  | AS1712A-AQFT          | AT25020N-10SA-5.0B |
| AT25DF081-SU       | CGA3E2X7R1H473M080AD | CL21B684KOFNNNG | CU01315R6BAT2A\5K     | CVDS40600          |
| DMP3056LDM-7-F     | DS80C390FNR          | DT180F08KSC     | EP5358LUI             | FAN3850TUC15X35    |
| GRM1555C1H470FA01D | HA12173EB            | HT82B430-02     | IMH11AT110            | IT9102TS/AX        |
| IXDD408YI          | K4P4G324EB-AGC2      | KSZ8721-BL      | LMV331M7X/NOPB        | LQP03TN2N4B02D     |
| LQS30A48-5V0RS03   | LT3509EDE#PBF        | LTA124EUBFS8TL  | MA2SD2500L            | MAX6358TZUT+T      |
| MB10F-10           | MC78M06ACDTRKG       | MC9S12XS256VAA  | MSG60U43              | S-29130AFJA-TB     |
| SMBT1124LT2        | SMF7V5A-HM3-08       | SN74HCT02N      | SST39SF020A-70-4C-PHE | STE47N50F          |
| STK404-140S        | TD121N16             | TD251N02KOF     | TDA12040H1/N1FD0      | TDA21471MTRPBF     |
| TL3844DR-8         | TND303S-TL           | TZMB9V1-GS08    | V300A24M500A          | ZR2431-01          |

Contact us: [Info@Y-IC.com](mailto:Info@Y-IC.com)

ADD: Unit A5-B5 No.509, 5/F Sing Win Factory Building, 15-17 Shing yip St, Kwun Tong, Kowloon, HongKong.

Copyright © 2019 YIC International Co., Limited