

Panasonic

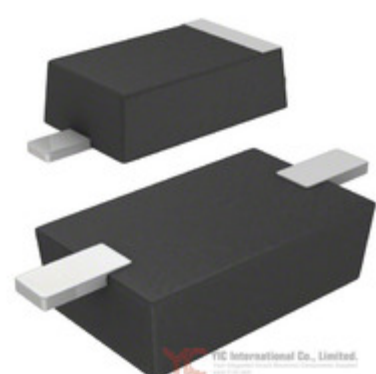


Image may be representation.
See specs for product details.

DB2230400L

Manufacturer Part Number:	DB2230400L
Manufacturer/Brand:	Panasonic
Part of Description:	DIODE SCHOTTKY 30V 1A MINI2
Datasheets:	DB2230400L.pdf
RoHS Status:	Lead free / RoHS Compliant
Stock Condition:	New original, 220000 pcs Stock Available.
Ship From:	Hong Kong
Shipment Way:	DHL/Fedex/TNT/UPS/EMS

Specifications

Part Number	DB2230400L
Manufacturer	Panasonic
Description	DIODE SCHOTTKY 30V 1A MINI2
Category	Discrete Semiconductor Products > Diodes - Rectifiers -
Part Status	220000 pcs Stock
Series	-
Mounting Type	Surface Mount
Package / Case	SOD-123F
Supplier Device Package	Mini2-F4-B
Diode Type	Schottky
Current - Average Rectified (Io)	1A
Voltage - Forward (Vf) (Max) @ If	530mV @ 1A
Current - Reverse Leakage @ Vr	30µA @ 30V
Voltage - DC Reverse (Vr) (Max)	30V
Speed	Fast Recovery = 200mA (Io)
Reverse Recovery Time (trr)	20ns
Operating Temperature - Junction	150°C (Max)
Capacitance @ Vr, F	59pF @ 10V, 1MHz
Packaging	Tape & Reel (TR)

DB2230400L is New Original in Stock, Search DB2230400L Datasheets, PDF, Inventory at Y-IC.com Online, Order DB2230400L Panasonic with warrantied and confidence. RFQ DB2230400L : Info@Y-IC.com

You May Be Also Be interested In:

<p>DB22254 Cannon DSUB GUIDE PIN PLATE FEMALE</p>	<p>DB24 Apex Tool Group PRY BAR ADJ NAIL PULL,24",BLACK</p>	<p>DB21W1SA00LF Amphenol FCI CONN DSUB RCPT 21POS STR SLD CUP</p>	<p>DB22255 Cannon DSUB GUIDE PIN PLATE MALE</p>
<p>DB2230600L Panasonic DIODE SCHOTTKY 30V 2A MINI2</p>	<p>DB2232000L Panasonic DIODE SCHOTTKY 30V 1.5A MINI2</p>	<p>DB21W1SA00LF Amphenol Commercial Products CONN D-SUB RCPT 21P STR SLDR CUP</p>	<p>DB241-FSH03-253A3 Bourns, Inc. POT 25K OHM CARBON LOGARITHMIC</p>

Hot Parts

More

- | | | | | |
|--|--|--|--|--|
| | | | | |
| | | | | |
| | | | | |
| | | | | |
| | | | | |
| | | | | |
| | | | | |
| | | | | |
| | | | | |
| | | | | |

Contact us:Info@Y-IC.com

ADD:Unit A5-B5 No.509, 5/F Sing Win Factory Building, 15-17 Shing yip St, Kwun Tong, Kowloon, HongKong.

Copyright © 2019 YIC International Co., Limited