



LAPIS Semiconductor

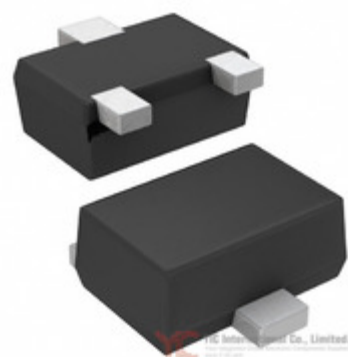


Image may be representation.  
See specs for product details.

## DA221MT2L

<b>Manufacturer Part Number:</b>	DA221MT2L
<b>Manufacturer/Brand:</b>	LAPIS Semiconductor
<b>Part of Description:</b>	DIODE ARRAY GP 20V 100MA VMD3
<b>Datasheets:</b>	<a href="#">DA221MT2L.pdf</a>
<b>RoHs Status:</b>	Lead free / RoHS Compliant
<b>Stock Condition:</b>	New original, 42465 pcs Stock Available.
<b>Ship From:</b>	Hong Kong
<b>Shipment Way:</b>	DHL/Fedex/TNT/UPS/EMS

### Specifications

Part Number	DA221MT2L
Manufacturer	LAPIS Semiconductor
Description	DIODE ARRAY GP 20V 100MA VMD3
Category	Discrete Semiconductor Products > Diodes - Rectifiers -
Part Status	42465 pcs Stock
Series	-
Mounting Type	Surface Mount
Package / Case	SOT-723
Supplier Device Package	VMD3
Diode Type	Standard
Voltage - Forward (Vf) (Max) @ If	1V @ 10mA
Current - Reverse Leakage @ Vr	100nA @ 15V
Diode Configuration	1 Pair Series Connection
Voltage - DC Reverse (Vr) (Max)	20V
Current - Average Rectified (Io) (per Diode)	100mA
Speed	Small Signal =< 200mA (Io), Any Speed
Operating Temperature - Junction	150°C (Max)
Packaging	Tape & Reel (TR)

DA221MT2L is New Original in Stock, Search DA221MT2L Datasheets, PDF, Inventory at Y-IC.com Online, Order DA221MT2L LAPIS Semiconductor with warrantied and confidence.  
RFQ DA221MT2L : [Info@Y-IC.com](mailto:Info@Y-IC.com)

### You May Be Also Be interested In:

Not Actual Photo  
YIC International Co., Limited.

**DA221MGT2L**  
ROHM  
DA221MGT2L ROHM

Not Actual Photo  
YIC International Co., Limited.

**DA223K**  
ROHM  
ROHM 23

**DA22213**  
Cannon  
MALE GUIDE PIN PLATE FOR  
DB15

**DA221TL**  
LAPIS Semiconductor  
DIODE ARRAY GP 20V 100MA  
EMD3

Not Actual Photo  
YIC International Co., Limited.

**DA221M T2L**  
ROHM  
DA221M T2L ROHM

Not Actual Photo  
YIC International Co., Limited.

**DA223**  
ROHM  
ROHM 523

Not Actual Photo  
YIC International Co., Limited.

**DA221G**  
LISION  
DA221G LISION

Not Actual Photo  
YIC International Co., Limited.

**DA221M FS T2L**  
ROHM  
DA221M FS T2L ROHM

### Hot Parts

More

- |              |                 |               |                   |                  |
|--------------|-----------------|---------------|-------------------|------------------|
| AM27C010     | AP2192AFGEG-7   | AS250C30      | D CY23S02SI-1T    | CY8C22213-24PVIT |
| DA204KT146   | DA204KT147      | D DA204U-T106 | DA204UFST106      | DA204UT106       |
| DA221-10A    | DA221-TL        | DA221MGT2L    | DA227YT2R         | DA22F2100L       |
| D DA24F4100F | DA2710100L      | DA271010AL    | DA2F100N12S       | DA2F100N4S       |
| DA2F100P12S  | DA2J10100L      | DA2J10100LMR  | DA2J1010YL        | DA2J101AZL       |
| DA2J10400L   | DA2J10800       | D DA2JF2300L  | DA2JF8000L        | DA2JF8100L       |
| DA2S10100K8  | D DA2S10100L    | DA2U10100L    | DA2U10100L        | DTC123JUA        |
| EL7532IYZ-T  | EMK107B7105KA-T | FDS8447_NL    | IRFIBE30G         | LM5035AMHX/NOPB  |
| LMBT3904TT1G | LT3011EDD#TRPBF | MAX478CSA     | D MC74ACT241DTR2G | MRF6S9125NR1     |
| ND231N12K    | RS1E200AH       | SDM40E20LC    | SI3473DV-T1-E3    | SKFH40/08DT      |

Contact us: [Info@Y-IC.com](mailto:Info@Y-IC.com)

ADD: Unit A5-B5 No.509, 5/F Sing Win Factory Building, 15-17 Shing yip St, Kwun Tong, Kowloon, HongKong.

Copyright © 2019 YIC International Co., Limited